

Anglo-Chinese School (Junior)



BITE-SIZED ASSESSMENT 1 (2023)

PRIMARY 4

SCIENCE

Monday

27 February 2023

35 min

Name: _____ () Class: 4.() Parent's Signature: _____

INSTRUCTIONS TO PUPILS

- 1 Do not turn over the pages until you are told to do so.
- 2 Follow all instructions carefully.
- 3 There are 7 questions in this booklet.
- 4 Answer ALL questions.
- 5 The marks are given in the brackets [] at the end of each question or part question.

| Question Paper | Possible Marks | Marks Obtained |
|-------------------|-------------------|-------------------|
| Total | 15 | |

This question paper consists of 8 printed pages (inclusive of cover page).

Answer questions 1 to 7. The number of marks available is shown in the brackets [] at the end of each question. (15 marks)

1. Unscramble the letters to solve the riddles. [2]

FELI CCLYE

I am a pattern that living things go through and I repeat myself continuously.

GORF

I lay my eggs in water. My eggs have jelly-like covering.

PHYMN

At this stage, I look like the adult but I am smaller and do not have wings.

LUTOMING

During this process, the young of some animals grow a new skin and shed their old skin.

(Go on to the next page)

| | |
|-------|---|
| SCORE | 2 |
|-------|---|

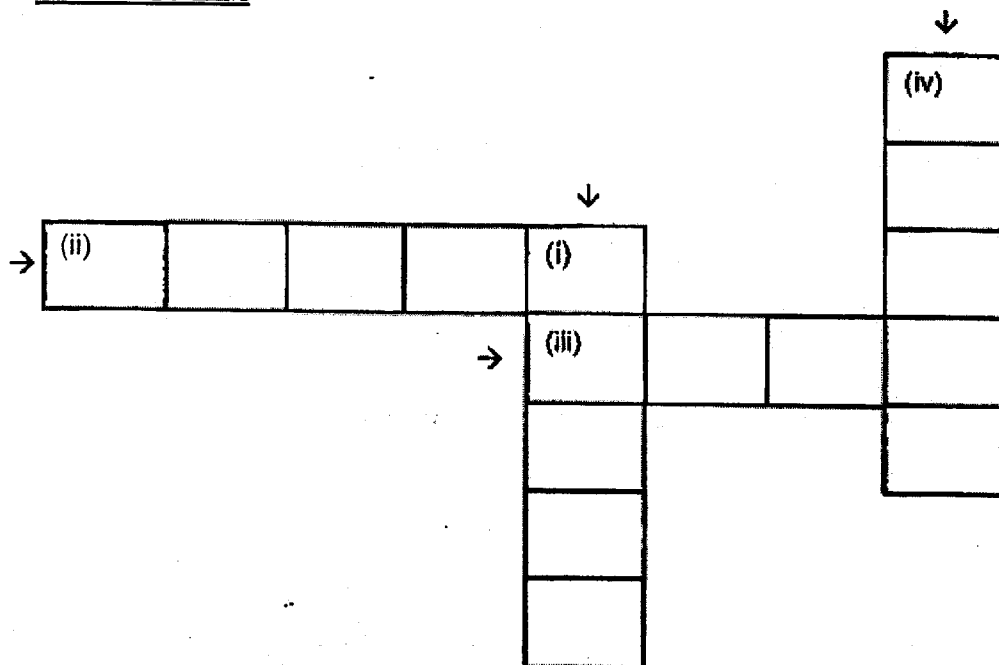
2. Write the answers to the cloze passage in the crossword puzzle below.

[2]

Cloze Passage

An adult mosquito lays its eggs in (i) _____ water. As it (ii) _____, it sheds its skin several times and eats a lot. When it changes into a pupa, it also breathes through an air (iii) _____ that pierces through the water surface. During this stage, it does not feed and it hardly (iv) _____.

Crossword Puzzle



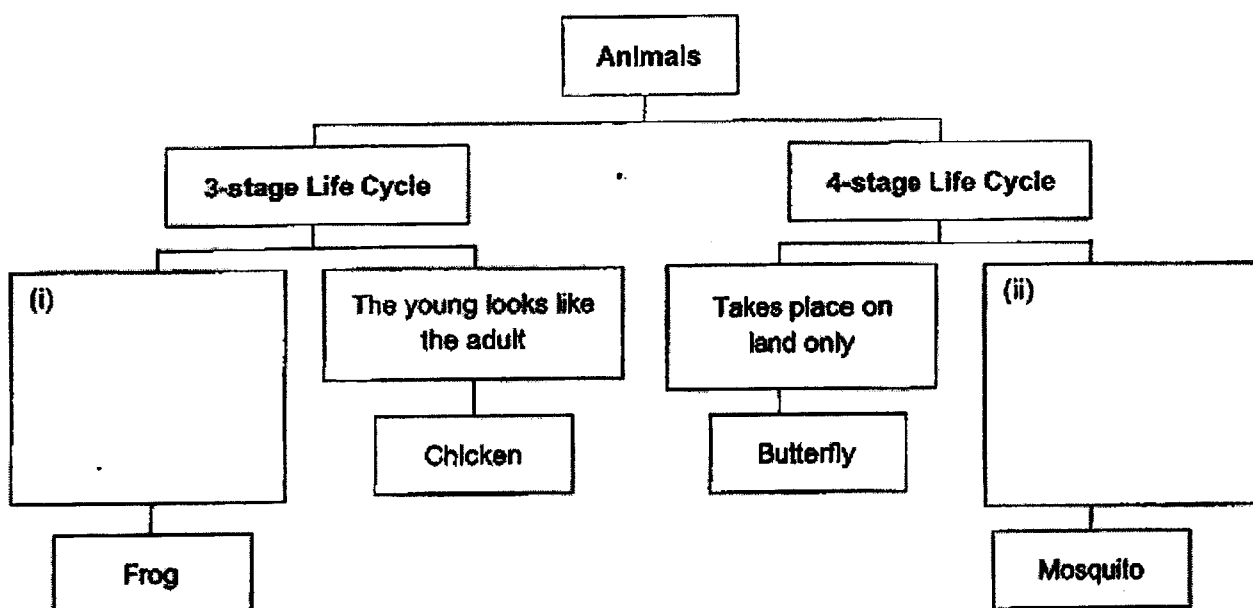
(Go on to the next page)

| | |
|-------|---|
| SCORE | 2 |
|-------|---|

3. Study the classification diagram.

(a) Complete the diagram by filling in the boxes for (i) and (ii).

[1]



(b) The life cycle of a mealworm beetle is most similar to the life cycle of a butterfly. Based on the diagram above, give two reasons why.

[1]

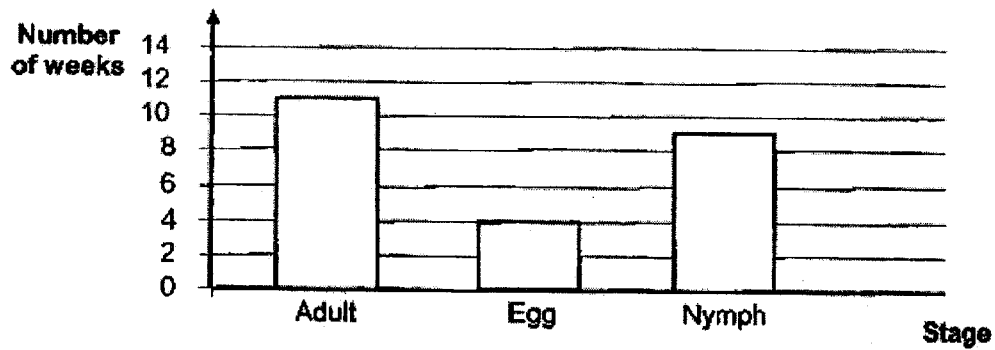
Reason 1: _____

Reason 2: _____

(Go on to the next page)

| | |
|-------|---|
| SCORE | |
| | 2 |

4. The graph shows the number of weeks that a grasshopper stays at the different stages of its life cycle.



Answer part (a) based on the graph.

[1]

- (a)(i) How many weeks does the grasshopper stay in its egg stage?

_____ weeks

- (ii) How many weeks does an egg take to become an adult?

_____ weeks

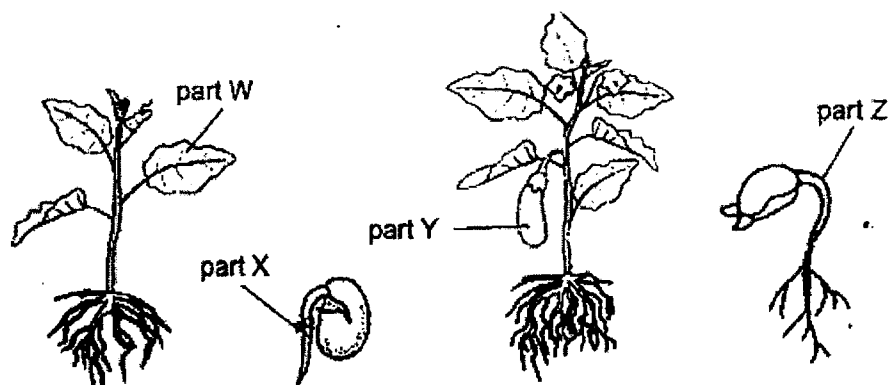
- (b) State a difference between the nymph and the adult grasshopper.
(Do not compare size)

[1]

(Go on to the next page)

| | |
|-------|---|
| SCORE | 2 |
|-------|---|

5. The diagram shows the growth of a brinjal plant.



- (a) Different parts of a plant start growing during different stages of its life cycle. Arrange parts W, X and Z of the plant in the order that they start growing. [1]

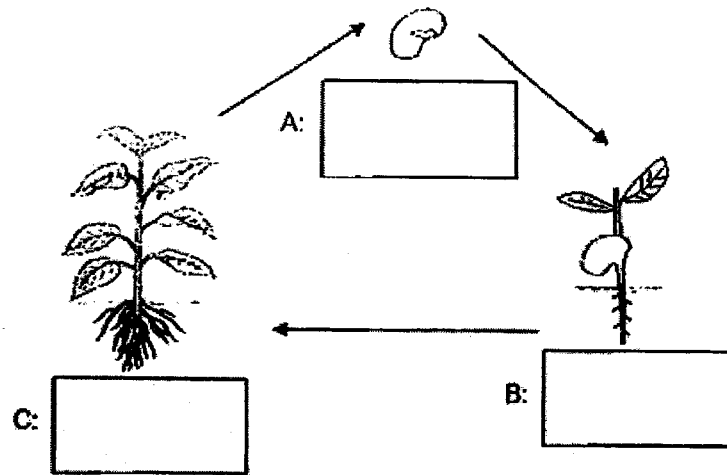


- (b) How did the plant get food before part W developed? [1]

(Go on to the next page)

| | |
|-------|---|
| SCORE | 2 |
|-------|---|

6. The life cycle of a plant is shown.

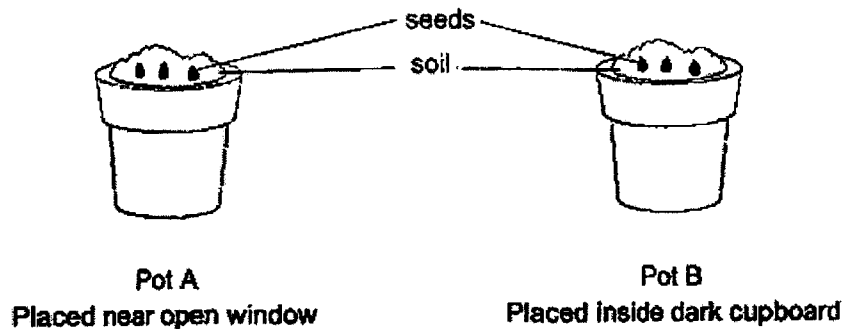


- (a) Name the stages of its life cycle by filling in the boxes A, B and C. [1]
- (b) At which stages, A, B and/or C, is the plant able to make food? Explain why. [1]

(Go on to the next page)

| | |
|-------|---|
| SCORE | |
| | 2 |

7. May wanted to find out if seeds need light to germinate. She placed some seeds into two identical pots, A and B, and watered them daily. She placed pot A near an open window and pot B inside a dark cupboard. She observed the growth of the seeds over four days.



- (a) State all the conditions necessary for the seeds to germinate. [1]

- (b) May's brother said that the seeds in Pot B will not germinate as they did not receive sunlight. Do you agree? Explain why. [1]

- (c) Tick (✓) the variable(s) which should be kept the same for May to test the aim of the experiment. [1]

| Variable | Tick (✓) |
|------------------|----------|
| Type of seeds | |
| Location of pots | |
| Amount of water | |
| Number of seeds | |

END OF PAPER

| | |
|-------|---|
| SCORE | 3 |
|-------|---|

SCHOOL : ACS (J) PRIMARY SCHOOL

LEVEL : PRIMARY 4

SUBJECT : SCIENCE

TERM : WA1 2023

CONTACT :

| | |
|------------|---|
| Q1) | Life cycle Frog Nymph Moulting |
| Q2) | i) still ii) grow iii) tube iv) moves |
| Q3) | a)i)The young does not look like its adult. ii)Takes place in water and land b)1)Both life cycle has four stages. 2)Both life cycle take place on land. |
| Q4) | a)i)4 ii)13 b)The adult grasshopper have wings but the nymph does not have wings. |
| Q5) | a)X → W → Z → Y b)From the seed leaves. |
| Q6) | a) A: seed B: young plant C: Adult plant b) C and B. Because stages C and B have leaves. |
| Q7) | a) Warmth, air and water. b) No. Because the seeds don't have leaves yet and only leaves need the sunlight. c) Type of seeds Amount of water Number of seeds |

